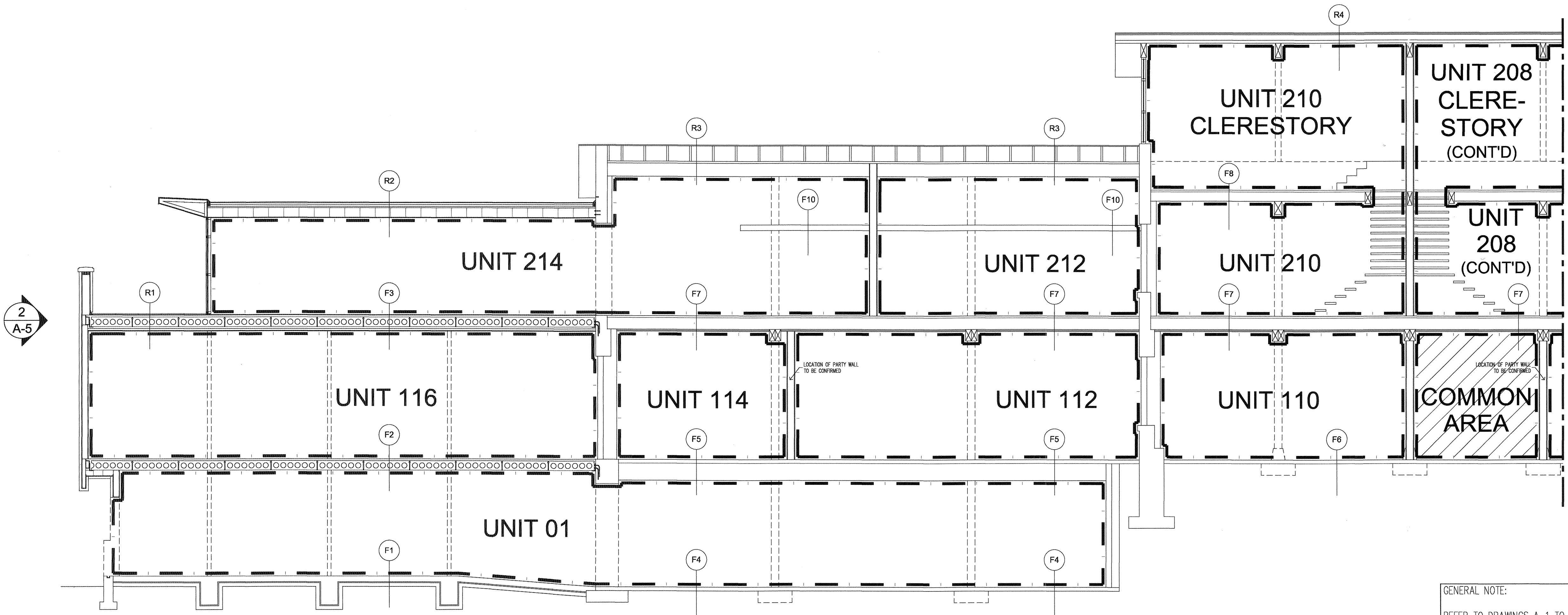


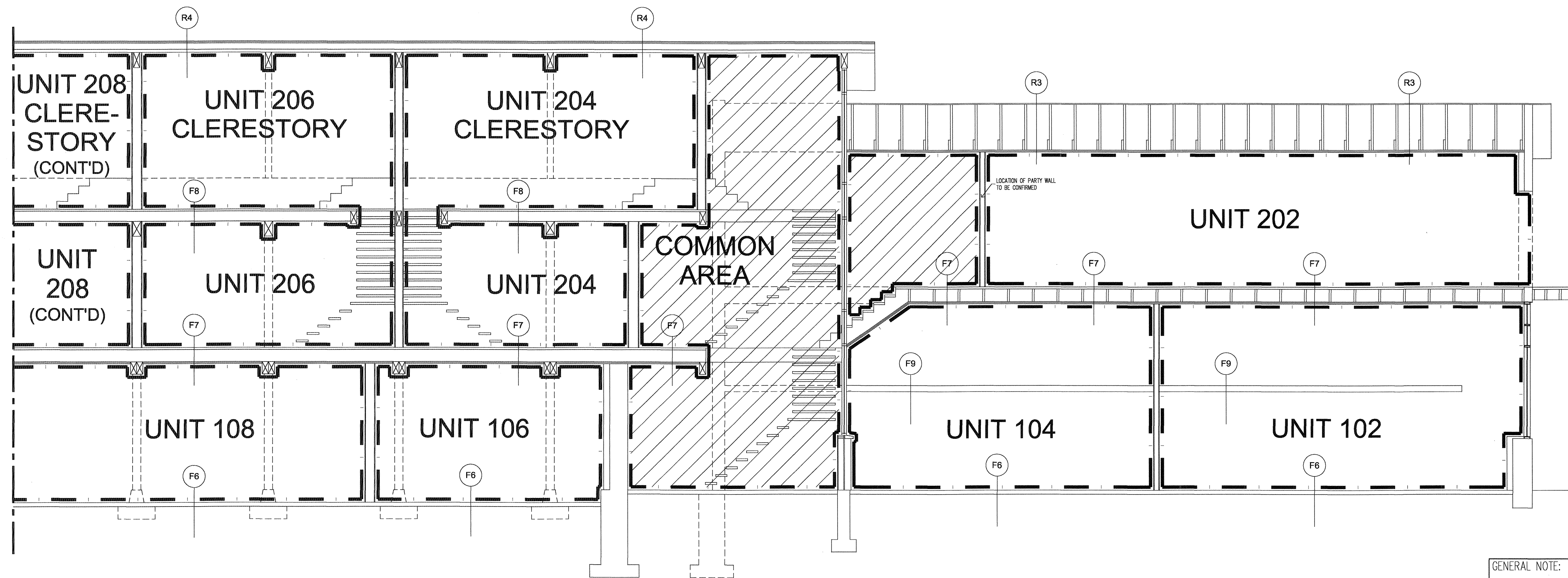
All drawings and noted construction assemblies reflect the as-found condition of the building at the time of site investigation, and where such assemblies were not fully visible they are an estimation based on other similar conditions. Architect's copyright reserved.



- T/O CLERESTORY LEVEL TERRACE  $\pm 37'-4"$
- T/O CLERESTORY LEVEL FLOOR  $\pm 34'-10"$
- T/O SECOND LEVEL FLOOR - MEZZANINE  $\pm 31'-9"$
- T/O SECOND LEVEL FLOOR - NORTH END  $\pm 23'-9"$
- T/O MAIN LEVEL FLOOR - NORTH END  $\pm 11'-2"$
- T/O LOWER LEVEL FLOOR - NORTH END  $\pm 0'-11"$
- T/O LOWER LEVEL FLOOR  $0'-0"$

GENERAL NOTE:  
REFER TO DRAWINGS A-1 TO A-4 FOR CONSTRUCTION TYPE SCHEDULE.

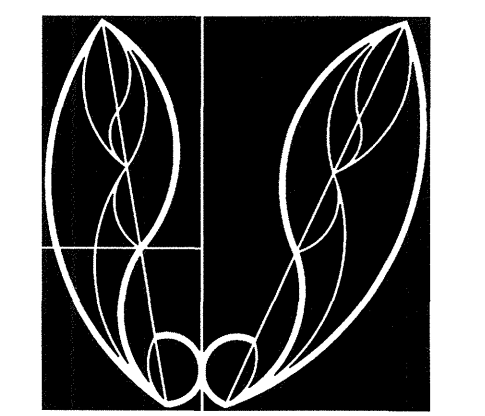
1 BUILDING SECTION - NORTH END  
SCALE 3/16" = 1'-0"



- T/O CLERESTORY LEVEL TERRACE  $\pm 37'-4"$
- T/O CLERESTORY LEVEL FLOOR  $\pm 34'-10"$
- T/O SECOND LEVEL FLOOR - SOUTH END  $\pm 28'-9"$
- T/O SECOND LEVEL FLOOR - NORTH END  $\pm 23'-9"$
- T/O MAIN LEVEL FLOOR - MEZZANINE  $\pm 20'-8"$
- T/O MAIN LEVEL FLOOR - SOUTH END  $\pm 12'-2"$
- T/O MAIN LEVEL FLOOR - NORTH END  $\pm 11'-2"$

GENERAL NOTE:  
REFER TO DRAWINGS A-1 TO A-4 FOR CONSTRUCTION TYPE SCHEDULE.

2 BUILDING SECTION - SOUTH END  
SCALE 3/16" = 1'-0"



Peter Mansfield, Architect  
B. Tech., M. Arch., O.A.A.  
15 Bndge Street, Almonte, ON  
613 256-5213

- Building Section -  
North & South Ends

Thoburn Mill  
83 Little Bridge Street  
Almonte ON K0A 1A0

Job No.: 0814 DWG NO.  
Scale: As Shown  
Date: September 2009  
Drawn By: TB Checked By: PM

**A-7**